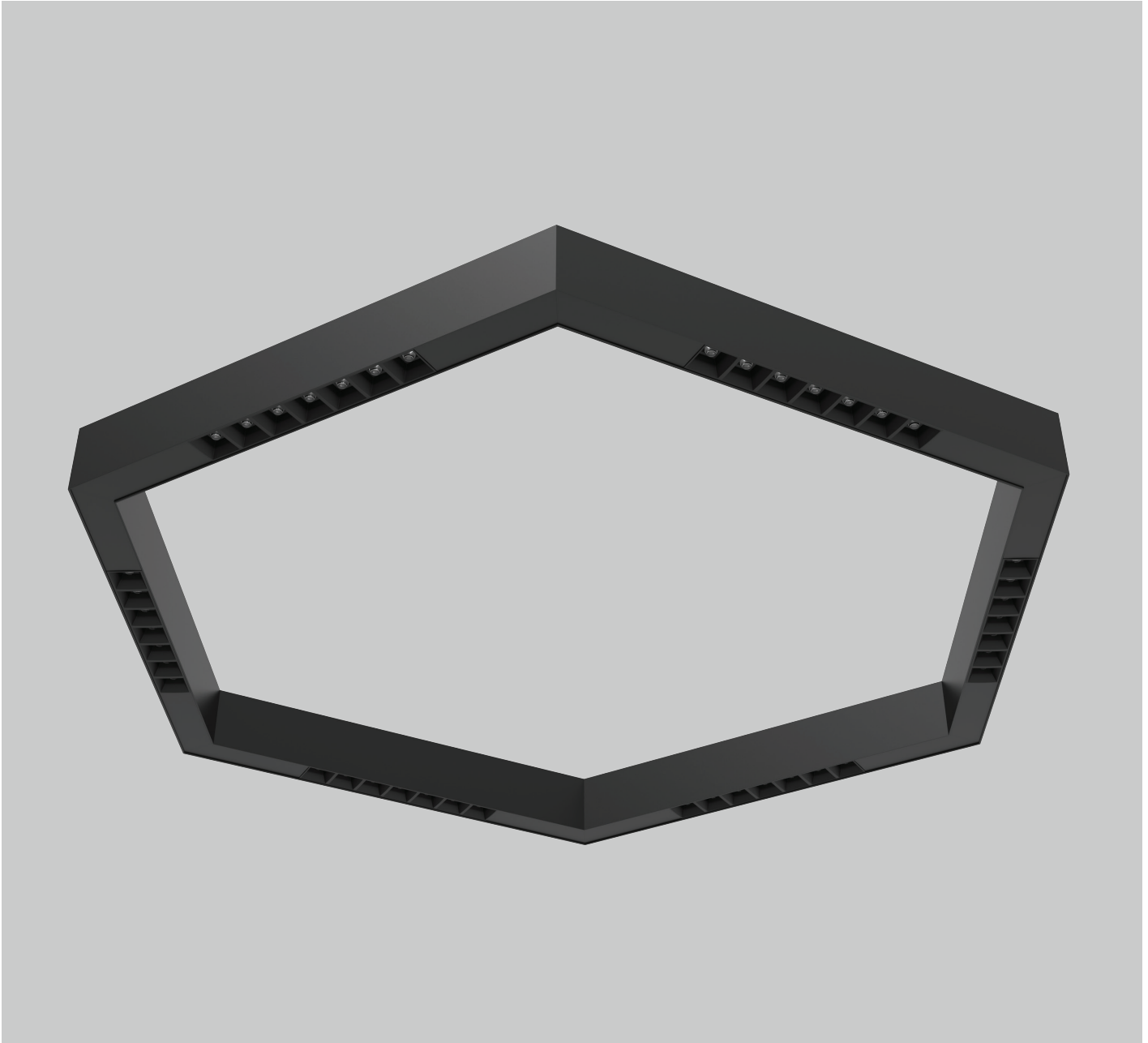


HEXA 1/45



Luminaire made of extruded aluminum profile. High luminous efficacy optics. Low glare UGR<19 lenses or selection of diffusers. Direct or direct/indirect lighting type. Top quality SMD LED modules with colour consistency MacAdams ≤ 3 , extensive portfolio of lumen ranges, CCTs and spectra. Variety of drivers: standard EVG on/off, DALI and wireless controlled as MasterConnect or Casambi on request. Built-in or remote, wireless occupancy & daylight sensor available to allow significant energy savings and wireless connectivity. Mounting type: surface mounted or suspended. Standard colour RAL 9003S, any other colour from basic RAL range available at no extra cost. Variety of beam angles, diffusers, lumen outputs and drivers allows to use this luminaire in different types of lighting projects. Wide selection of standard sizes. All accessories such as suspension wires or power cables should be ordered separately. Bespoke size on request.

Luminous flux & Luminaire Power tolerance up to 10%. System power consumption depends on components used. Luminous efficacy depends on type of LED's, electronics, optics and diffuser. The most up to date technical parameters can be found on our website and in database of LDT files.

Lighting direction:



PDF datasheet:



HEXA 1/45

Mounting:	Surface mounted, suspended, wall mounted, trimless recessed
Body material:	Aluminium profile
Colour:	Standard white RAL 9003M, other RAL colours on request
Lumen output:	Standard up to 4000 lm/meter, any other on request
LED module:	Signify (Philips), Tridonic or equivalent SMD LED modules
Colour temperature:	3000/4000K/2700-6500K TW other on request
Colour Rendering:	CRI>80 in standard, other on request
Driver:	EVG on-off/DALI/TW DT8/MC (MasterConnect)/Casambi, other on request
Wireless control:	Philips MasterConnect / Casambi, other on request
Daylight/Occupancy sensor:	Built-in XC sensor or wireless MCS sensor
Emergency unit:	On request
Operating temperature range:	0°C ... +35°C
IP Class:	IP20 in standard
Power:	220-240V 50/60Hz
Lighting direction:	Direct, direct / indirect lighting
Light distribution:	Symmetric
Diffusor:	OP opal acrylic / MP19H microprismatic UGR<19
Optics:	White reflector / UGR<19 diffused lenses PREMIUM 1 type
Lens shade:	BM black matt / WM white matt
Beam angle:	35°/50°/80° - all types available in our LDT file database
Warranty:	5 Years standard warranty

- HEXA 1/45 DN** surface mounted or suspended, light down, OP or MP19H diffusor.
- HEXA 1/45 UP_DN** suspended luminaire, light up&down, OP or MP19H diffusor.
- HEXA 1/45 PREMIUM 1 DN** surface mounted or suspended, light down, PREMIUM1 UGR<19 lenses.
- HEXA 1/45 PREMIUM 1 UP_DN** suspended luminaire, light up&down, PREMIUM1 UGR<19 lenses / index number.

All current index numbers, lumen outputs, power consumption and many other technical information are available in our 2024 pricelist. Details on wireless lighting control systems on page number 896.



MC control
Energy saving MasterConnect wireless lighting control system with daylight and movement detection technology on request.

 Zigbee  Bluetooth



PREMIUM1 UGR<19 lens



OP white acrylic diffusor



MP19H microprismatic diffusor



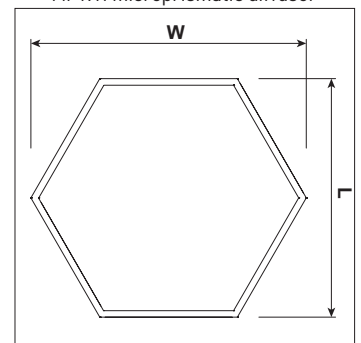
XCS wireless switch



MCS wireless daylight&occ sensor



XC daylight&occ sensor



Basic dimensions